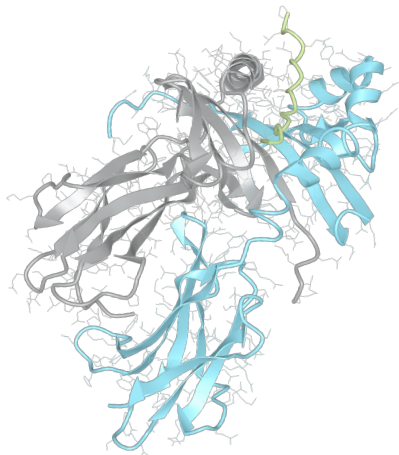


# Product datasheet



## sHLA– DQB1\*06:09 DQA1\*01:04

DQB1\*0609, DQB10609, DQB1\*06, DQB06, DQ6  
DQA1\*0104, DQA10104, DQA1\*01, DQA01

|                         |                   |
|-------------------------|-------------------|
| <b>Serological Name</b> | DQ6               |
| <b>Peptide Load</b>     | Endogenous        |
| <b>Modification</b>     | Unmodified        |
| <b>Conjugation</b>      | Unconjugated      |
| <b>SKU</b>              | DQB10609/DQA10104 |

### Product Description

|  |   |
|--|---|
| <b>Allele Name</b>                         | DQA1*01:04<br>DQB1*06:09  |
| <b>HLA Class</b>                           | HLA Class II  |
| <b>HLA Gene Locus</b>                      | HLA-DQ  |
| <b>Alternative Allele Name A Chain</b>     | DQA1*0104, DQA10104, DQA1*01, DQA01   |
| <b>Alternative Allele Name B Chain</b>     | DQB1*0609, DQB10609, DQB1*06, DQB06, DQ6  |
| <b>Description</b>                         | Recombinant, truncated Class II soluble Human Leukocyte Antigen (sHLA), naturally folded and glycosylated, loaded with endogenous peptides. |
| <b>Serological Name</b>                    | DQ6   |
| <b>Serological Split</b>                   | DQ1   |
| <b>Allele Frequency [World Population]</b> |   |
| <b>A chain</b>                             | 3.9%  |
| <b>B chain</b>                             | 1.5%  |

### Associated products

[DQB10609/DQA10104bio](#)  
[DQB10609/DQA10104pe](#)

## Product Specification

|                                    |  |
|------------------------------------|--|
| <b>Product name</b>                | HLA-DQB1*06:09/DQA1*01:04  |
| <b>HLA Species</b>                 | Human  |
| <b>Host Cell Line Species</b>      | Mouse  |
| <b>Clone Designation</b>           | EP510-SCS-B5C2   |
| <b>Tail Specification</b>          | ZP   |
| <b>Peptide Load</b>                | Endogenous   |
| <b>Modification</b>                | Unmodified   |
| <b>Conjugation</b>                 | Unconjugated   |
| <b>Complexity</b>                  | Monomer  |
| <b>Protein Format</b>              | Recombinant, truncated, zipper-stabilized, soluble, non-modified, non-labeled, endogenously loaded |
| <b>Storage Temperature</b>         | 4°C (This product should be stored undiluted)  |
| <b>Form</b>                        | Liquid   |
| <b>Concentration</b>               | 1000.0 µg/ml   |
| <b>Formulation</b>                 | PBS/0.02% Sodium Azide   |
| <b>pH</b>                          | 7.4  |
| <b>Purification Method</b>         | Affinity Chromatography  |
| <b>Grade</b>                       | Research Use Only [RUO]  |
| <b>Authentication Verification</b> | Sequence Based Typing  |

## Protein Sequences

|                             |   |
|-----------------------------|---|
| <b>Alpha Chain Sequence</b> | EGIVADHVAS CGVNLYQFYG PSGQYTHEFD GDEEFYVDLE RKETAWRWPE FSKFGGFDPQ<br>GALRNMAVAK HNLNIMIKRY NSTAATNEVP EVTVFSKSPV TLGQPNTLIC LVDNIFPPVV<br>NITWLSNGQS VTEGVSETSF LSKSDHSFFK ISYLTFLPSA DEIYDCKVEH WGLDQPLLKH<br>WEPEIPAPMS EVDGGGGGAQ LEKELQALEK ENAQLEWELQ ALEKELAQ         |
| <b>Beta Chain Sequence</b>  | RDSPEDFYVQ FKGMCYFTNG TERVRLVTRY IYNREEYARF DSDVGVYRAV TPQGRPVAEY<br>WNSQKEVLER TRAEALDTCR HNYEVGYRGI LQRRVEPTVT ISPSRTEALN HHNLLVCSVT<br>DFYYPGQIKVQ WFRNDQEETA GVVSTPLIRN GDWTFQILVM LEMTPQRGDV YTCHVEHPSL<br>QSPTTVEWRA QSESAQSKVD GGGGAQLKK KLQALKKKNA QLKWKLQALK KCLAQ |

## Related Products

[DQB10602/DQA10104](#)  
[DQB10603/DQA10104](#)  
[DQB10301/DQA10201](#)  
[DQB10602/DQA10102](#)

## Applications

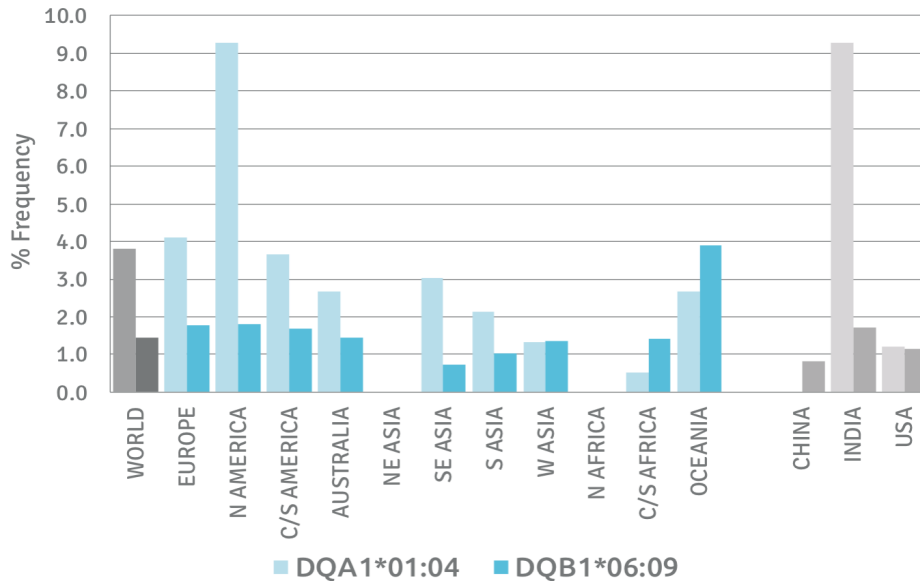
HLA Sandwich ELISAs  
 HLA Direct ELISAs  
 HLA-Sera Antibody Assays  
 HLA Controls in ELISA Assays  
 HLA Assay Standards  
 HLA Blocking Assays  
 HLA Neutralizing Assays  
 HLA Competition Assays  
 HLA Bead Assays  
 HLA Immunization Procedures

## Recommended Antibodies

-

## Allele Frequency

### Worldwide Allele Frequency



Please note:

ALL PRODUCTS ARE FOR RESEARCH USE ONLY. NOT FOR COMMERCIAL USE IN DIAGNOSTIC PROCEDURES.  
 For more information, please visit our Policies section on our website. For licensing inquiries, please contact

[licensing@hlaprotein.com](mailto:licensing@hlaprotein.com)

HLA Protein  
 PURE PROTEIN LLC

**Eplet Assignments**

**DQB1\*06:09**

| Eplet | Polymorphic Residues | Antibody Reactivity |
|-------|----------------------|---------------------|
| 3S    | 3S                   |                     |
| 9Y    | 9Y                   |                     |
| 13GM  | 13G14M               |                     |
| 23R   | 23R                  |                     |
| 26L   | 26L                  |                     |
| 37YA  | 37Y38A               |                     |
| 45G   | 45G                  |                     |
| 45GV  | 45G46V               | Yes                 |
| 46VY  | 46V 52P 28T          | Yes                 |
| 52PQ  | 53Q 89G 90I          | Yes                 |
| 55R   | 55R                  | Yes                 |
| 56P   | 56P                  |                     |
| 57V   | 57V                  | Yes                 |
| 66ER  | 66E67V70R71T         |                     |
| 66EV  | 66E67V               |                     |
| 67VT  | 67V71T               |                     |
| 70RT  | 70R71T               |                     |
| 74EL  | 74E75L77T            |                     |
| 77T   | 77T                  | Yes                 |
| 87Y   | 87Y                  | Yes                 |
| 125G  | 125G                 |                     |
| 130Q  | 86G 130Q             |                     |
| 135D  | 135D                 |                     |
| 167R  | 167R                 |                     |
| 182S  | 182S                 | Yes                 |
| 185T  | 185T                 |                     |
|       |                      |                     |
|       |                      |                     |
|       |                      |                     |
|       |                      |                     |
|       |                      |                     |
|       |                      |                     |
|       |                      |                     |
|       |                      |                     |
|       |                      |                     |
|       |                      |                     |
|       |                      |                     |

**Eplet Assignments**

**DQA1\*01:04**

| Eplet | Polymorphic Residues                | Antibody Reactivity |
|-------|-------------------------------------|---------------------|
| 2G    | 2G 199T                             |                     |
| 25YT  | 25Y26T                              |                     |
| 40E   | 40E                                 | Yes                 |
| 52SK  | 52S 53K 11C 18F 45A 64R 66M 69A 80Y | Yes                 |
| 75I   | 75I 161D 163I                       |                     |
| 129QS | 129Q130S                            |                     |
| 160A  | 160A                                |                     |
| 160AD | 160A161D                            |                     |
|       |                                     |                     |
|       |                                     |                     |
|       |                                     |                     |
|       |                                     |                     |
|       |                                     |                     |
|       |                                     |                     |
|       |                                     |                     |
|       |                                     |                     |
|       |                                     |                     |
|       |                                     |                     |
|       |                                     |                     |
|       |                                     |                     |